

MONTHLY MEMBERSHIP PROGRESS REPORT

LOCATION WISCONSIN

District 27 E1

Results as of: 1/31/2023

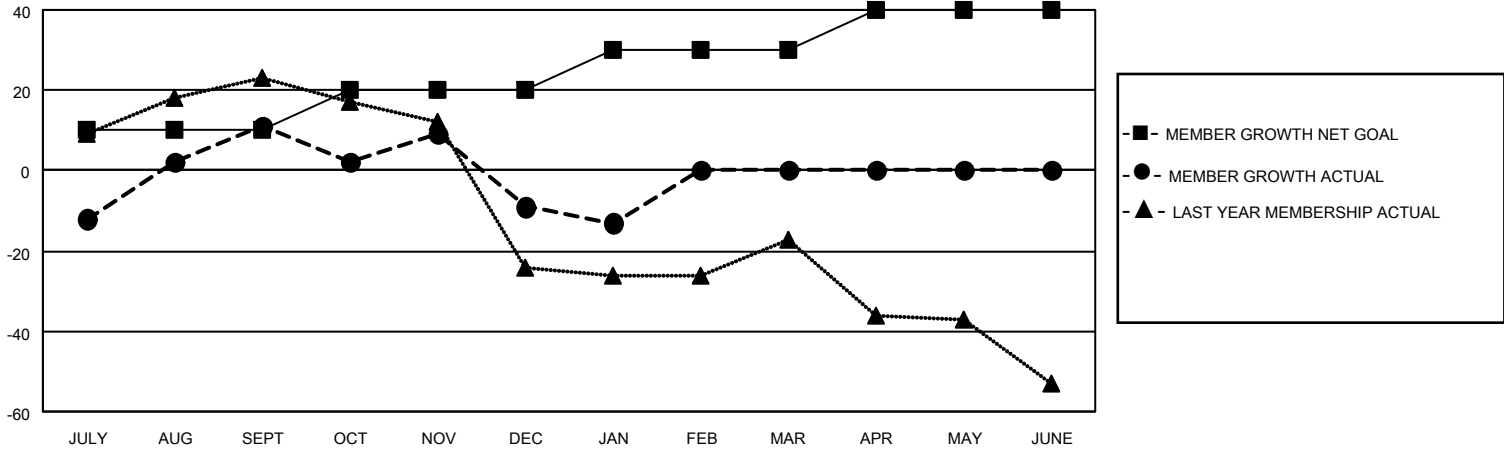
Clubs			
RESULTS FOR 2022-2023			
QUARTER	NEW CLUB GOAL	NEW CLUBS	DROPPED CLUBS
JULY/AUG/SEPT	0	0	0
OCT/NOV/DEC	0	0	0
JAN/FEB/MAR	0	0	0
APR/MAY/JUNE	1	0	0

Members			
RESULTS FOR 2022-2023			
QUARTER	MEMBER GROWTH NET GOAL	MEMBER GROWTH ACTUAL	DROPPED MEMBERS ACTUAL (including transfers)
JULY/AUG/SEPT	10	61	42
OCT/NOV/DEC	10	37	50
JAN/FEB/MAR	10	11	14
APR/MAY/JUNE	10	0	0

GOALS AND ACTUAL NEW CLUBS CUMULATIVE



GOALS AND ACTUAL MEMBERS CUMULATIVE



DROPPED CLUBS: 0	
<u>DROPPED MEMBERS</u>	
DECEASED	9
CLUB CANCELLED	0
OTHER	97
TOTAL	106

27 CLUBS OF 45 ADDED 1 OR MORE NEW MEMBERS

[CLICK HERE FOR CUMULATIVE MEMBERSHIP DATA](#)

<u>GENDER DISTRIBUTION</u>	
MALE	958 (67.09%)
FEMALE	470 (32.91%)
NON BINARY	0 (0.00%)
PREFER NOT TO ANSWER	0 (0.00%)
TOTAL FAMILY UNIT MEMBERS	402
FAMILY MEMBERS PAYING HALF DUES	204